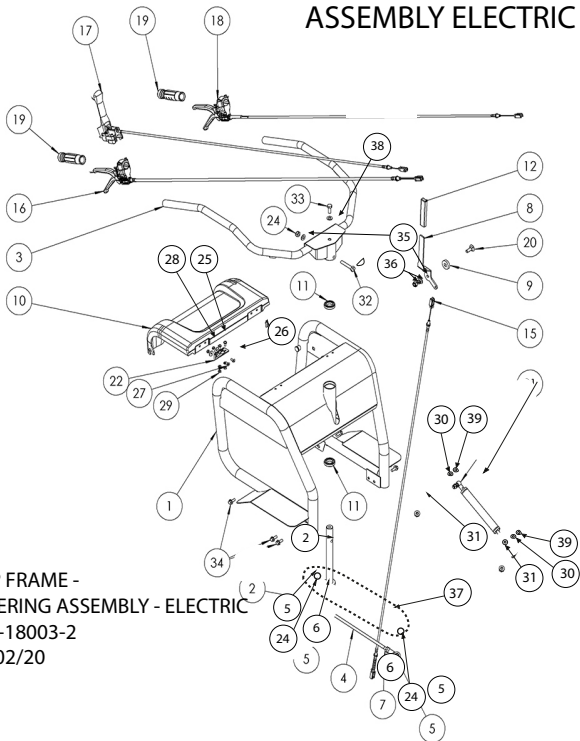


TOP FRAME STEERING ASSEMBLY ELECTRIC



TOP FRAME -
STEERING ASSEMBLY - ELECTRIC
800-18003-2
18/02/20

TOP FRAME STEERING ASSEMBLY ELECTRIC				
	PART NUMBER	DESCRIPTION	QTY	NOTES
1	101-00400	TOP FRAME WA TRUXTA BRANDED	1	
	101-04500	TOP FRAME WA UNBRANDED	1	
2	101-00800	REAR STEERING PIVOT WA	1	
3	101-01000	HANDLE AND PIVOT WA	1	
4	101-00901	ROD STEERING	1	SERIAL NO UP TO B181709
5	3-5026	ROD END M10 RH	2	SERIAL NO UP TO B181709
6	8-10003	NUT M10 BZP	1	
8	101-99914	PRESSING TIP HANDLE	1	
9	102-99939	SPACER TIP LEVER	1	
10	101-99945	ENGINE COVER	1	
11	53-0160	BEARING BALL 42x25x9	2	
12	72-0200	MOULDING TIP HANDLE	1	
15	75-00900	CABLE SKIP RELEASE (B)	1	
16	75-01900	CABLE ASSY FWD ELECTRIC	1	
17	75-02000	HANDLE ASSY DEADMAN ELECTRIC	1	
18	75-02100SP	CABLE ASSY REV ELECTRIC	1	
19	74-1022	HANDLE GRIP	2	
20	7-10130	COACHBOLT M10 X 30	1	
21	2-1100	DAMPER ASSEMBLY	1	
22	74-1023	HINGE 50x50x6	2	
24	8-10006	NUT M10 NYLOC	6	
25	7-6056	M6 X 15 BUTTON HD CAP	4	
26	4-6001	WASHER M6 FORM A BZP	8	
27	7-6007	SCREW - 6 X 15 CSK SCREW BZP	4	
28	4-6018	WASHER M6 X 20 X1.2 BZP	4	
29	8-6007	NUT M6 NYLOC	8	
30	4-8006	WASHER M8 FORM A BZP	2	
31	8-8008	NUT M8 NYLOC BZP	2	
32	101-04600	PIN STEERING LOCATION	1	
33	7-10005	SCREW SET M10 X 25 BZP	1	
34	7-8080	BOLT M8 X 20 HEX BZP	6	
35	4-1005	M10 FORM A WASHER	2	
36	8-10002	M10 THIN NUT	2	
37	101-04700	STEERING ROD ASSY	1	SERIAL NO FROM B181710
38	4-1040	M10 X 40 X 3 WASHER	1	
39	4-8020	SPACER M8 X 4 THK	2	